

1. Overview

Thank you for purchasing PLANET 75-watt AC power supply for GPL-8000.

Power Supply Unit	Input Range
GPL-PWR75-AC	100 to 240V AC

Open the box of the Redundant Power Supply unit and carefully unpack it. The box should contain the following items:

- The AC Power Supply unit x 1
- User's Manual x 1
- Power Cord x 1

If any item is found missing or damaged, please contact your local reseller for replacement.

- 1 -

3. Installing Redundant Power Supply Unit



Note

The GPL-PWR75-AC is hot-swappable, so there is no need to power off the GPON OLT before removing it from the GPON OLT.

Follow these steps to install the redundant power in the GPON OLT:

1. Place the GPON OLT on a flat surface. Use a screwdriver to unscrew screws on both sides of the blank plate to remove the blank plate. Do not discard the blank plate as it can be used again when removing the power supply unit from the GPON OLT.

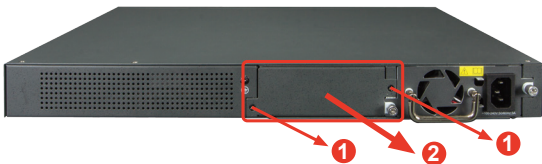


Figure 3-1 Removing the Blank Plate

- 3 -

2. Introduction

Before installation, please be sure to read this user's manual carefully to successfully complete the correct installation of the GPL-PWR75-AC 75-watt AC Power Supply Unit. This manual shows how to quickly install the power in the GPL-8000.

The following figure shows the front panel of the GPL-PWR75-AC GPON OLT.

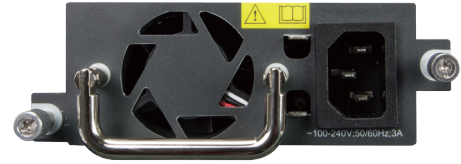


Figure 2-1 GPL-PWR75-AC Front View

- 2 -

2. Install the redundant power by sliding it into the compartment.



Figure 3-2 Sliding the Power Supply Unit into the Compartment

3. Next, tighten the thumbscrews on both sides.



Figure 3-3 Tightening the Thumbscrews

- 4 -

www.PLANET.com.tw

75-watt AC Power Supply for GPL-8000

▶ **GPL-PWR75-AC**



PLANET Technology Corp.

10F., No. 96, Minquan Rd., Xindian Dist., New Taipei City 231, Taiwan

2351-BA0240-000

Warning:
This device is compliant with Class A of CISPR 32.
In a residential environment this device may cause radio interference.



Energy Saving Note of the Device

This power required device does not support Standby mode operation. For energy savings, please remove the power cable to disconnect the device from the power circuit. Without removing the power cable, the device will still consume power from the power source. In view of Saving the Energy and reducing the unnecessary power consumption, it is strongly suggested to remove the power cable from the device if this device is not intended to be active.

4. Removing Redundant Power Supply Unit

Follow these steps to remove the redundant power from the GPON OLT:

1. Remove AC power cord from the GPL-PWR75-AC.
2. To remove the redundant power from the GPL-8000, loosen the thumbscrews on both sides and pull it out.

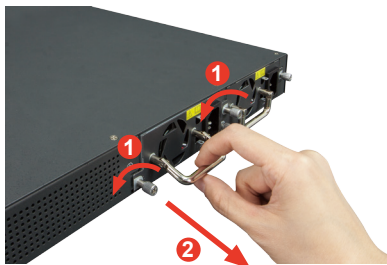


Figure 4-1 Removing the GPL-PWR75-AC