

Quick Installation Guide

KVM-210-08/KVM-210-16

8/16-Port Combo KVM Switch



1. Package Contents

Thank you for choosing PLANET Combo KVM Switch. The KVM Switch provides a useful function that controls a computing infrastructure that combines multiple computers with other peripherals.

Open the box of the KVM Switch and carefully unpack it. The box should contain the following items:

- Combo KVM Switch x 1
- Quick Guide x 1
- KVM Cable x 1
- Rack-mounting Kit x 1
- Power Adapter x 1

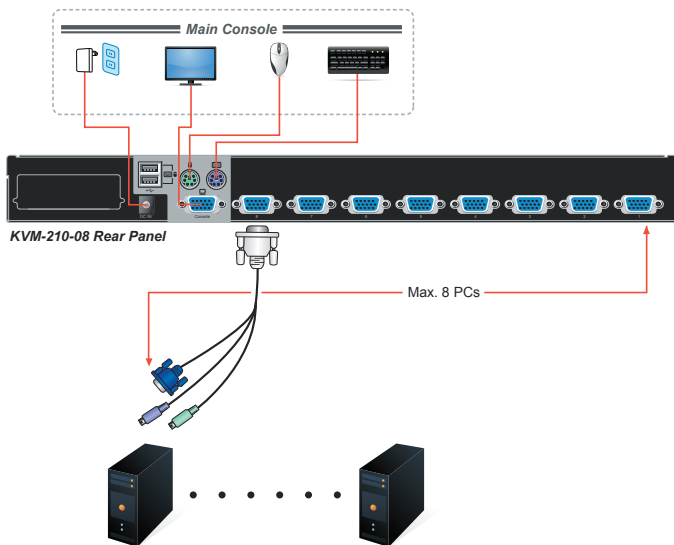


Note

If there is any item missing or damaged, please contact the seller immediately.

2. Application Diagram

PLANET's KVM switch family is the most cost-effective and simple solution for controlling a group of PCs in the network. Multiple computers can be managed via only one single set of monitor, keyboard and mouse directly. No software drivers or system configuration are required. iMac, Power Mac and Sun systems can also be supported by using PLANET's innovative USB-PS2 adapter. Switching among computers is achieved simply by pushing a button on the KVM switch or a pre-defined hotkey on the keyboard or via the KVM-810's on screen display (OSD) function.



3. Physical Introduction

8/16-Port Combo KVM Switch

➤ Front Panel



➤ LED and button definitions


LED	Color	Function
On Line	Red	Lights to indicate that the PC is operating.
Select	Green	Press this button to select a PC port.

Button	Function
Reset	This button is hidden in the pinhole. This button is used to restore all the factory default settings. Please hold the reset button for about 5 seconds to load default.

➤ Rear Panel





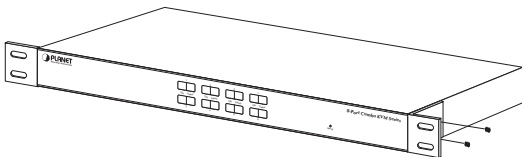
Interface	Description
Power Jack	<p>The input power is 9V DC.</p> <div style="border: 1px solid orange; padding: 5px; display: flex; align-items: center;">  <p>Note Use the power adapter included in the package; otherwise, it may damage the unit and result in danger.</p> </div>
USB Port	Plug USB keyboard and mouse in this port.
Computer Port	Install the KVM cable connected to a PC here.
Console Ports	<ul style="list-style-type: none"> ● In the Master KVM, connect the monitor, keyboard and mouse here. ● In the Slave KVM, connect the cable from the Master computer port here.

4. Hardware Installation

The Switch KVM provides a standard 19-inch rack for the installation of devices. Please use the rack installation accessories attached with the product package. First install the accessories to the device and then the device to the rack.

Step 1. Place your KVM Switch on a hard flat surface, with the front panel positioned towards your front side.

Step 2. Attach a rack-mount bracket to each side of the KVM Switch with supplied screws attached to the package.



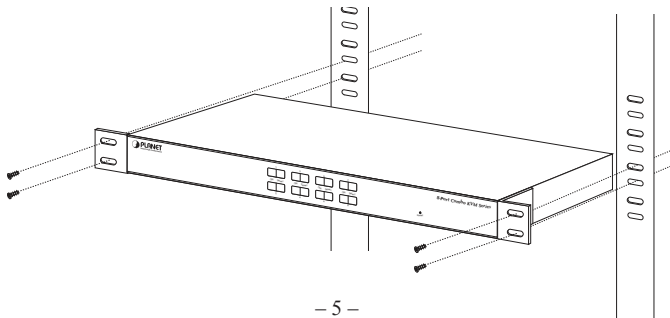
Note

1. You must use the screws supplied with the mounting brackets. Damage caused to the parts by using incorrect screws would invalidate your warranty.
2. Please make sure computer and switch KVM are turned off.

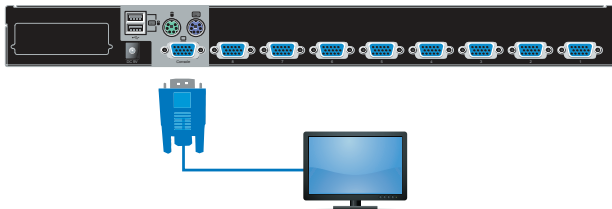
Step 3. Secure the brackets tightly.

Step 4. Follow the same steps to attach the second bracket to the opposite side.

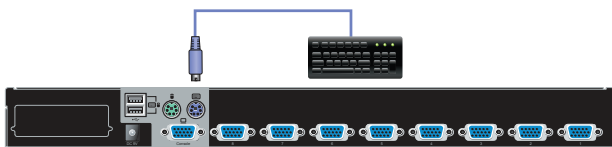
Step 5. After the brackets are attached to the Web Smart Switch, use suitable screws to securely attach the brackets to the rack.



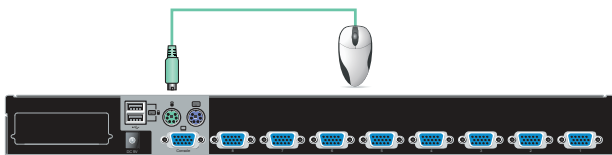
Step 6. Connect the monitor to the KVM Switch. Using the attached cable, or the one included with your monitor, connect it to the HDB-15 female port on the back of the KVM unit labeled with the monitor symbol at the CONSOLE port connector.



Step 7. Connect the keyboard to the KVM Switch, via PS/2 or USB interface.



Step 8. Connect the mouse to the KVM Switch, via PS/2 or USB interface.



Step 9. Attach the power supply to the KVM unit and plug the other end into an electrical receptacle. Now you will see the LED for Port 1 light up. Switch on your monitor.

5. Operations

There are three ways to switch PC. Please see the below operation instructions for more understanding.

➤ **Manual Key**

You just need to press the **Port Select Button** on the front panel of the KVM. The **Selection LED (Green)** is on, indicating that you are switching to the corresponding port.



Note

The Port Select Button functions only when connected to a PC.

➤ **Switch Hotkey**

You can select the **QVS (Quick View Setting)** from the OSD of the PC first (for a quick switch of PC) and use the **keyboard** to switch to the previous or next set of PC.

Scroll + Scroll + Num (Default setting)

Ctrl + Ctrl + Num

Alt + Alt + Num

Shift + Shift + Num

Example: Press Scroll + Scroll + 2 and switch to PC port 2.

➤ **OSD (On Screen Display) Activating Key**

Press the **Activating Key** to start the OSD.

Ctrl + Ctrl (Default setting)

Scroll + Scroll

Alt + Alt

Shift + Shift

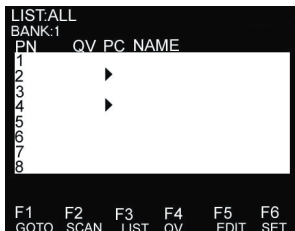


Figure: OSD Screen after press "Ctrl" twice.

Further Information:

The above steps introduce the simple installation of the KVM Switch. For further details on the installation of the Combo KVM Switch, please refer to the user manual which can be downloaded from the PLANET website.

<http://www.planet.com.tw/en/support/download.php?type1=102&model=48924&type=3>



If you have further questions, please contact the local dealer or distributor where you purchased this product or you can contact PLANET directly at the following email address: support@planet.com.tw

PLANET Technology Corp.

11F., No. 96, Minquan Rd., Xindian Dist., New Taipei City 231, Taiwan

2011-F00330-000

