

# IP Telephony

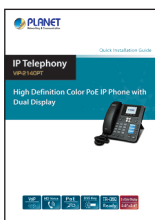
VIP-2140PT

## High Definition Color PoE IP Phone with Dual Display



## VERIFY THE CONTENTS INSIDE THE PACKAGE BOX

The package should contain the following items plus VIP-2140PT. If any item is missing or damaged, please contact the seller immediately.



Quick Installation Guide



Handset Cord



Handset



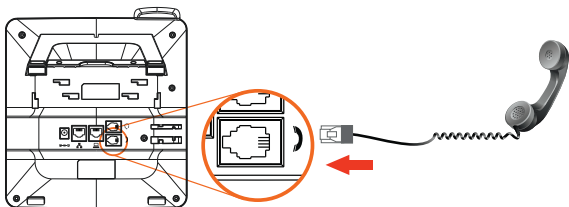
Stand



RJ45 Cable

## Step 1. Handset Connection

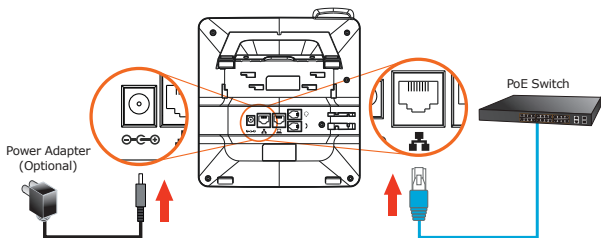
Plug one end of the handset cord into the handset and the other end into the handset jack



## Step 2. Connecting Power System

The VIP-2140PT can be powered either by external AC/DC adapter or by connecting to an IEEE 802.3af/at PSE device such as 802.3af injector/hub or 802.3af/at PoE switch.

Once the VIP-2140PT is powered, the LCD screen will prompt for POST.

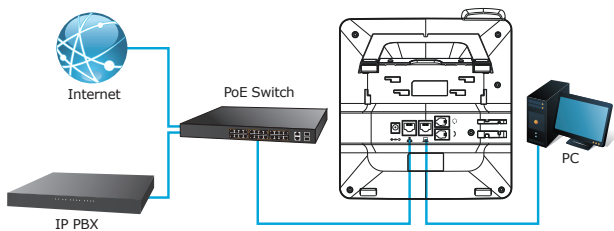




Note

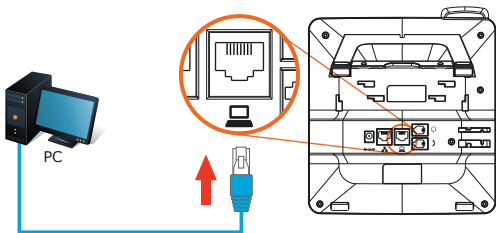
1. This unit does not include the 5V power adapter.
2. Only WAN supports PoE.

### Step 3. Connecting Network



#### Step 4. Computer Network Setup

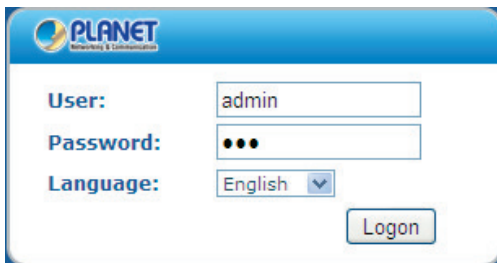
Set your computer's IP address to 172.16.0.x, where x is a number between 2 to 254 (except 1 which is being used for the phone by default). If you don't know how to do this, please ask your network administrator. Connect your PC to VIP-2140PT PC port.



## Step 5. Login Prompt

Use web browser (Internet Explorer 6.0 or above) to connect to 172.16.0.1 (type this address in the address bar of web browser).

You'll be prompted to input user name and password: **admin** and **123**



The screenshot shows a web-based login interface for PLANET. At the top, there is a blue header with the PLANET logo and the text 'Networking & Communications'. Below the header, the login form is displayed. It includes three input fields: 'User:' with the text 'admin' entered, 'Password:' with three black dots representing a masked password, and 'Language:' with a dropdown menu showing 'English'. A 'Logon' button is located at the bottom right of the form.

Default WAN IP	172.16.0.1
Default Subnet Mask	255.255.0.0
Default Gateway	172.16.0.254
Default Login User Name	admin
Default Login Password	123
LCD Advanced Settings Password	123

## Further Configuration

For detailed configuration, please check user's manual which can be downloaded from the website.



If you have any other question, please contact the dealer where you purchased this product or you can contact PLANET directly at the following email address:

[support\\_voip@planet.com.tw](mailto:support_voip@planet.com.tw)

[www.PLANET.com.tw](http://www.PLANET.com.tw)

**PLANET Technology Corp.**

11F., No. 96, Minquan Rd., Xindian Dist., New Taipei City 231, Taiwan

2011-D10600-000

