

**Industrial IP50-rated 4-Port 10/100/1000T
802.3at PoE + 2-Port 10/100/1000T
Managed Ethernet Switch (-40~75 degrees C)**

IGS-5226-4P2T




Quick Installation Guide

Table of Contents

1. Package Contents	3
2. Making Waterproof RJ45 Cable.....	4
3. Connecting Waterproof Cable to the IGS-5226-4P2T	7
4. M12 DC Power Cable Pin Assignment	9
5. Requirements	10
6. Starting Web Management	11
7. Saving Configuration via Web	14
8. Recovering Back to Default Configuration.....	15
9. Customer Support	16

1. Package Contents

Thank you for purchasing PLANET Industrial L2+ Managed Ethernet Switch. **“Industrial Managed Switch”** is used as an alternative name in this Quick Installation Guide. Open the box of the Industrial Managed Switch and carefully unpack it. The box should contain the following items:

<p>1 x The Industrial Managed Switch</p> 	<p>1 x Quick Installation Guide</p> 
<p>6 x Waterproof RJ45 Connector</p> 	<p>1 x 1.2m 5-pin A-code M12 Power Cable</p> 
<p>1 x DIN Rail Kit</p> 	<p>1 x Wall-mount Kit</p> 

If any item is found missing or damaged, please contact your local reseller for replacement.

2. Making Waterproof RJ45 Cable

Please read the following topics and perform the procedure in the order being presented.

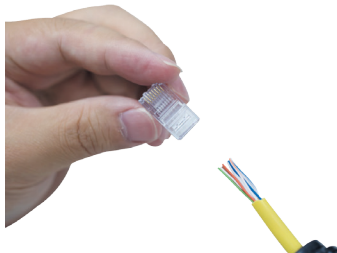
Step 1: Take a waterproof RJ45 jack out from the Industrial Managed Switch box and prepare one RJ45 cable.



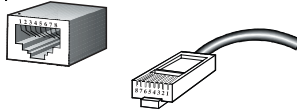
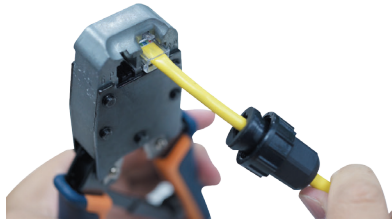
Step 2: Insert the RJ45 cable through the waterproof RJ45 jack.



Step 3: Prepare an RJ45 connector.



Step 4: Put the RJ45 connector in place with cable crimper.



The standard RJ45 receptacle/connector

There are 8 wires on a standard UTP/STP cable and each wire is color-coded. The following shows the pin allocation and colors of straight-through cable connection:



Note

Straight Cable		SIDE 1	SIDE 2	
1	SIDE 1	1 = White/Orange	1 = White/Orange	
2		2 = Orange	2 = Orange	
3		3 = White/Green	3 = White/Green	
4		4 = Blue	4 = Blue	
5		5 = White/Blue	5 = White/Blue	
6		SIDE 2	6 = Green	6 = Green
7			7 = White/Brown	7 = White/Brown
8			8 = Brown	8 = Brown

Please make sure your waterproof RJ45 cables are with same pin assignment and colors as the above picture before deploying the cables into your network.

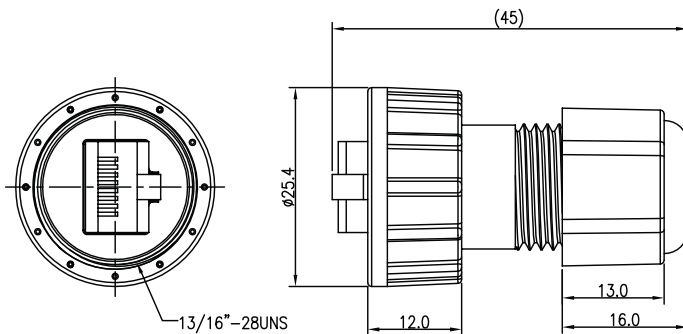
Step 5: To lock in the RJ45 connector, pull back the cable till the connector nicely fits into the waterproof connector hole.





Note

1. Use only the waterproof RJ45 connector provided in the package of IGS-5226-4P2T.
2. If the waterproof RJ45 connector is found missing or damage, please contact your local reseller where you purchased from. If the new waterproof RJ45 connector is obtained from PLANET, make sure its dimensions are the same.



3. Never use any waterproof RJ45 connector that is not purchased from PLANET or doesn't have the same dimensions of the IGS-5226-4P2T; it will damage the device permanently.

3. Connecting Waterproof Cable to the IGS-5226-4P2T

Step 1: Turn counterclockwise to remove the waterproof screw nuts of an RJ45 port and power input.



Step 2: Insert the waterproof RJ45 connector into the port of the Industrial Managed Switch.



Step 3: Turn clockwise to tighten the screw nut of the waterproof RJ45 connector.



Step 4: Insert the waterproof M12 power connector into the port of the power input.



Step 5: Turn clockwise to tighten the screw nut of the waterproof M12 power connector.



Note

1. Make sure to tightly close all interfaces to have waterproof effect.
2. Before connecting the DC power cord, please check whether your local DC power source is stable.

4. M12 DC Power Cable Pin Assignment

The front panel of the Industrial Managed Switch provides one M12 A-coded 5-pin male connector for DC power input. Please use the power cable with the M12 A-coded 5 pin female connector from the Industrial Managed Switch package for DC power input. The M12 DC power cable pin assignment is shown below:



M12 DC power cable pin assignment & wire code



V1 positive (+) pin = black cable

V1 negative (-) pin = brown cable

V2 positive (+) pin = blue cable

V2 negative (-) pin = white cable



Note

Make sure you connect the correct power pin to your DC power source.

1. The wire gauge for the power cable should be in the range of 12 ~ 24 AWG.
2. The DC power input range is 48 ~ 56V DC.



Note

There are two methods to install the Industrial Managed Switch – DIN-rail mounting and wall-mount plate mounting. For more detailed information, please refer to Chapter 2 of the user's manual.

5. Requirements

Workstations running Windows XP/2003/Vista/7/8/10/2008, MAC OS X or later, Linux, UNIX, or other platforms are compatible with TCP/IP Protocols.

Workstations are installed with Ethernet NIC (Network Interface Card)

Ethernet Port Connection

- Network cables -- Use standard network (UTP) cables with RJ45 connectors.
- The above PC is installed with Web browser and JAVA runtime environment plug-in.



Note

It is recommended to use Internet Explore 8.0 or above to access the Industrial Managed Switch. If the Web interface of the Industrial Managed Switch is not accessible, please turn off the anti-virus software or firewall and then try it again.

6. Starting Web Management

The following shows how to start up the **Web Management** of the Industrial Managed Switch. Note the Industrial Managed Switch is configured through an Ethernet connection. Please make sure the manager PC must be set to the same **IP subnet address**.

For example, the default IP address of the Industrial Managed Switch is **192.168.0.100**, then the manager PC should be set to **192.168.0.x** (where x is a number between 1 and 254, except 100), and the default subnet mask is 255.255.255.0.

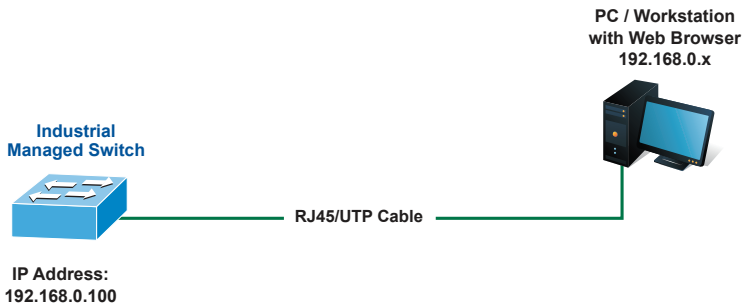


Figure 6-1: IP Management Diagram

Logging in to the Industrial Managed Switch

1. Use Internet Explorer 8.0 or above Web browser and enter IP address **http://192.168.0.100** (default IP address) to access the Web interface.
2. When the following dialog box appears, please enter the default user name and password "admin". The login screen in Figure 6-2 appears.

Default Username: **admin**

Default Password: **admin**

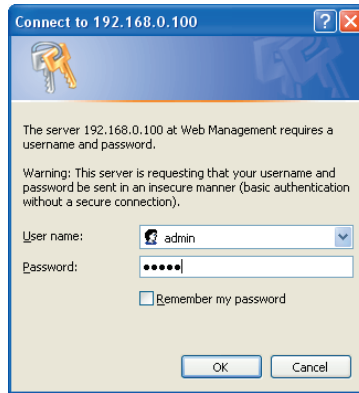


Figure 6-2: Login Screen

3. After entering the password, the main screen appears as Figure 6-3 shows.



Figure 6-3: Web Main Screen of Industrial Managed Switch

The Switch Menu on the left of the Web page lets you access all the commands and statistics the Industrial Managed Switch provides.

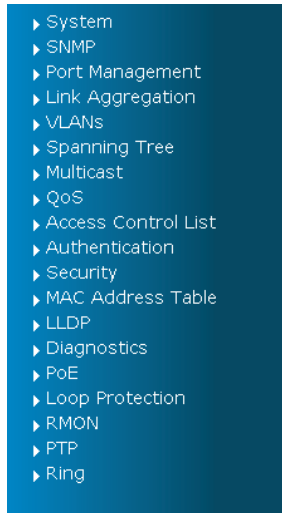


Figure 6-4: Switch Menu



Note

If you are not familiar with Switch functions or the related parameter, press **“Help icon”** anytime on the Web page to get the help description.

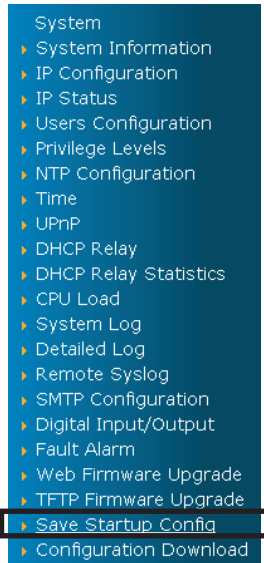
Now, you can use the Web management interface to continue the Switch management. Please refer to the user’s manual for more details.

7. Saving Configuration via Web

In the Industrial Managed Switch, the running configuration file is stored in the RAM. In the current version, the running configuration sequence of **running-config** can be saved from the RAM to FLASH by executing save startup config command, so that the running configuration sequence becomes the startup configuration file, which is called configuration save.

To save all applied changes and set the current configuration as a startup configuration, the startup-configuration file will be loaded automatically across a system reboot.

1. Click **System, Save Startup Config**.



2. Press the **"Save Configuration"** button.



8. Recovering Back to Default Configuration

■ IP address has been changed or admin password has been forgotten –

To reset the IP address to the default IP address “**192.168.0.100**” or reset the login password to default value, press the hardware **reset button** on the rear panel for about **10 seconds**. After the device is rebooted, you can login the management Web interface within the same subnet of 192.168.0.xx.



Figure 8-1: IGS-5226-4P2T Reset Button

9. Customer Support

Thank you for purchasing PLANET products. You can browse our online FAQ resource and User's Manual on PLANET Web site first to check if it could solve your issue. If you need more support information, please contact PLANET switch support team.

PLANET online FAQ:

<http://www.planet.com.tw/en/support/faq.php?type=1>

Switch support team mail address:

support_switch@planet.com.tw

IGS-5226-4P2T User's Manual:

<http://www.planet.com.tw/en/support/download.php?type1=22153&model=48894&type=3>



(Please select your switch model name from the drop-down menu of Product Models.)

Copyright © PLANET Technology Corp. 2016.

Contents are subject to revision without prior notice.

PLANET is a registered trademark of PLANET Technology Corp. All other trademarks belong to their respective owners.