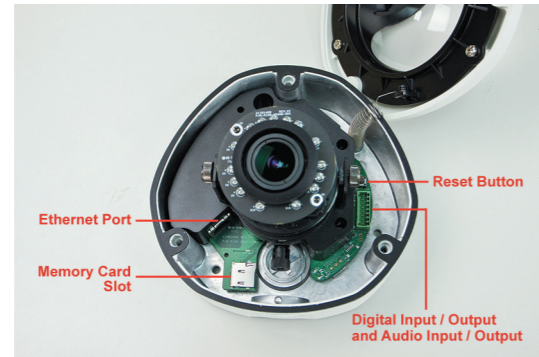




VERIFY THE CONTENTS INSIDE THE BOX
The package should contain the following items. If any item is missing or damaged, please contact the seller immediately.

- Camera x 1
- Quick Installation Guide x 1
- Mounting Screw Kit x 1
- Cable Gland x 2
- Terminal Block x 1
- Screw Torx x 1
- Mounting Diagram x 1

Prior Installation Hardware Overview



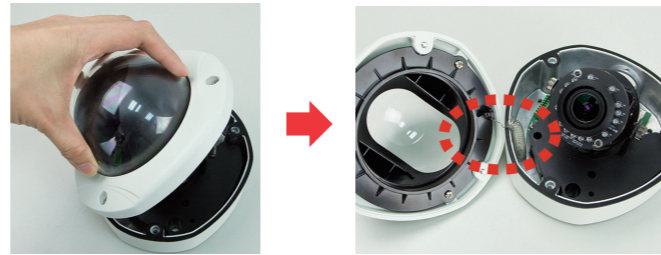
Step 1: Installation

1. Loosen the three screws securing the dome cover.



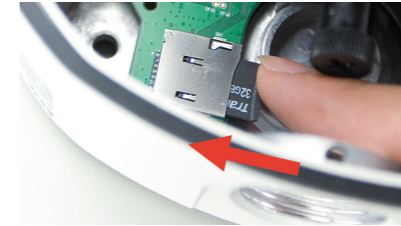
Note
To avoid scratches or leaving fingerprints on the dome cover, it is recommended to retain the plastic covering the dome cover until the camera is completely installed. However, the plastic has been removed on the pictures in this documentation to show clarity of the procedures being described.

2. Carefully lift to open the dome cover and place it by the side of the camera.



Note
Do not abruptly lift the dome cover; it is attached to the camera with a spring wire.

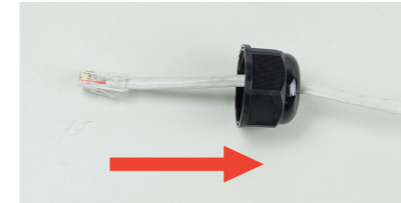
3. If necessary, insert a memory card with the metallic contacts facing down into the card slot of the camera.



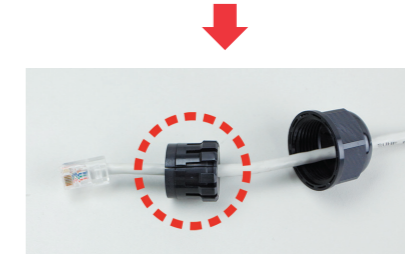
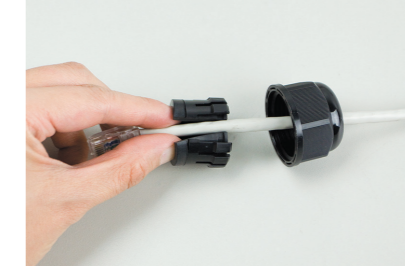
4. Install Cable Gland with RJ45 cable.
 - A. Disassemble the cable gland as shown below:



- B. Slip the clamping nut through the Ethernet cable. (Ethernet cable is not included)



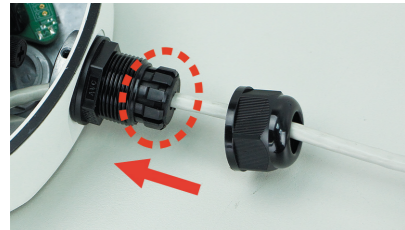
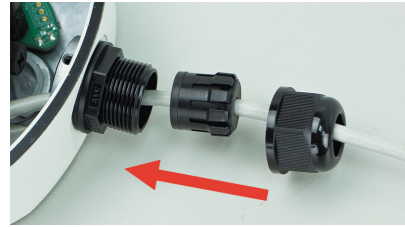
- C. Wrap around the cable with the sealing insert with claw.



- D. Attach the cable gland body to the hole of the camera.



E. Pull the network cable through the hole of the cable gland body and tighten the clamping nut.



5. Tighten the three screws to attach the dome cover to the camera body.



6. Remove the plastic covering the dome cover.

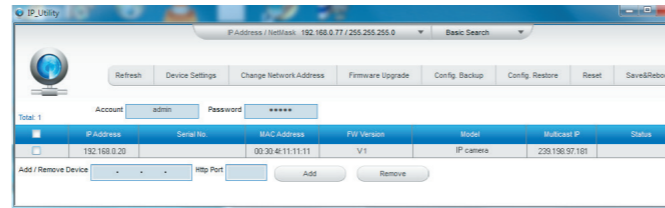
Step 2: Connecting Network and PoE



Note The camera supports IEEE 802.3af and is only powered from PoE.

Step 3: Running Search Tool to Locate the IP Camera

- Download camera search tool: IP Utility, from the Download Center of our website (<http://www.planet.com.tw/en/support/download.php?model=48712&type=8184#list>).
- Run IP Utility to start searching for cameras.
- After the IP Utility is launched, all cameras found in your local area network will be displayed.



Step 4: The Dialog Box for Further Configuration

- The default account and password are both **admin**.



- Click the IP Camera's IP address you want to configure.



Note The default IP address of camera is 192.168.0.20.

- The IP Camera will be connected via Web browser automatically.
- When the device is logged on for the first time, the browser will prompt a message; please click **"Allow"** to install controls.



Note If IE9 or higher version browser is used, it is suggested that PLANET camera Web link should be added as a trusted site.

Appendix A: Default Setting

Default DHCP Client	On
Default IP Address	192.168.0.20 – if DHCP Server does not exist in the network
Default Login User Name	admin
Default Login Password	admin
Search Tools	IP Utility

Appendix B: Extended Software Introduction

PLANET provides the following software to cooperate with ICA-E camera series. With these software, user is able to manage, analyze, and even recognize vehicle license plate.

CV7L: <http://www.planet.com.tw/en/support/download.php?model=48724&type=8184#list>

CV7L is a freeware of video management to help users monitor and record images / videos from multiple cameras simultaneously by using a single PC. It is able to operate up to 16 channels with advanced features such as event management and recording, tri-display monitoring, smart motion detection, PTZ control and E-map.



CV7-VA: <http://www.planet.com.tw/en/support/download.php?model=48725&type=8184#list>

CV7-VA is a payware of video analytics that is designed to transform your video surveillance network into a smart detection system. The software provides Enter Area, People Counting, Missing Object, Line Crossing, Unattended Object and Tamper functions. Once a suspicious activity is detected, users can play back to watch these events and use them as references or evidences if needed. With these intelligent functions, it can help you enhance your existing surveillance system while providing you with valuable information for management.



CV7-LP: <http://www.planet.com.tw/en/support/download.php?model=48726&type=8184#list>

CV7-LP is a payware of video analytics that is designed to detect and recognize vehicle license plates. This software is able to automatically locate and read license plates appearing in a certain area, and match this data against the database. It provides efficiency in parking and traffic control, as well as law enforcement. With CV7-LP, you can easily cross-check if a vehicle that is passing through the parking gate or parked in the designated space matches its parking permit. Moreover, law enforcement officers can effortlessly identify suspicious vehicles by matching the license plate with its database.

If you need further information, please scan the QR code or contact PLANET directly at the following email address: support_ica@planet.com.tw.



Further Configuration

For detailed configuration, please check user's manual on our website. (<http://www.planet.com.tw/en/support/download.php?model=48712&type=3#list>)



If you have any other question, please contact the dealer where you purchased this product or you can contact PLANET directly at the following email address: support_ica@planet.com.tw